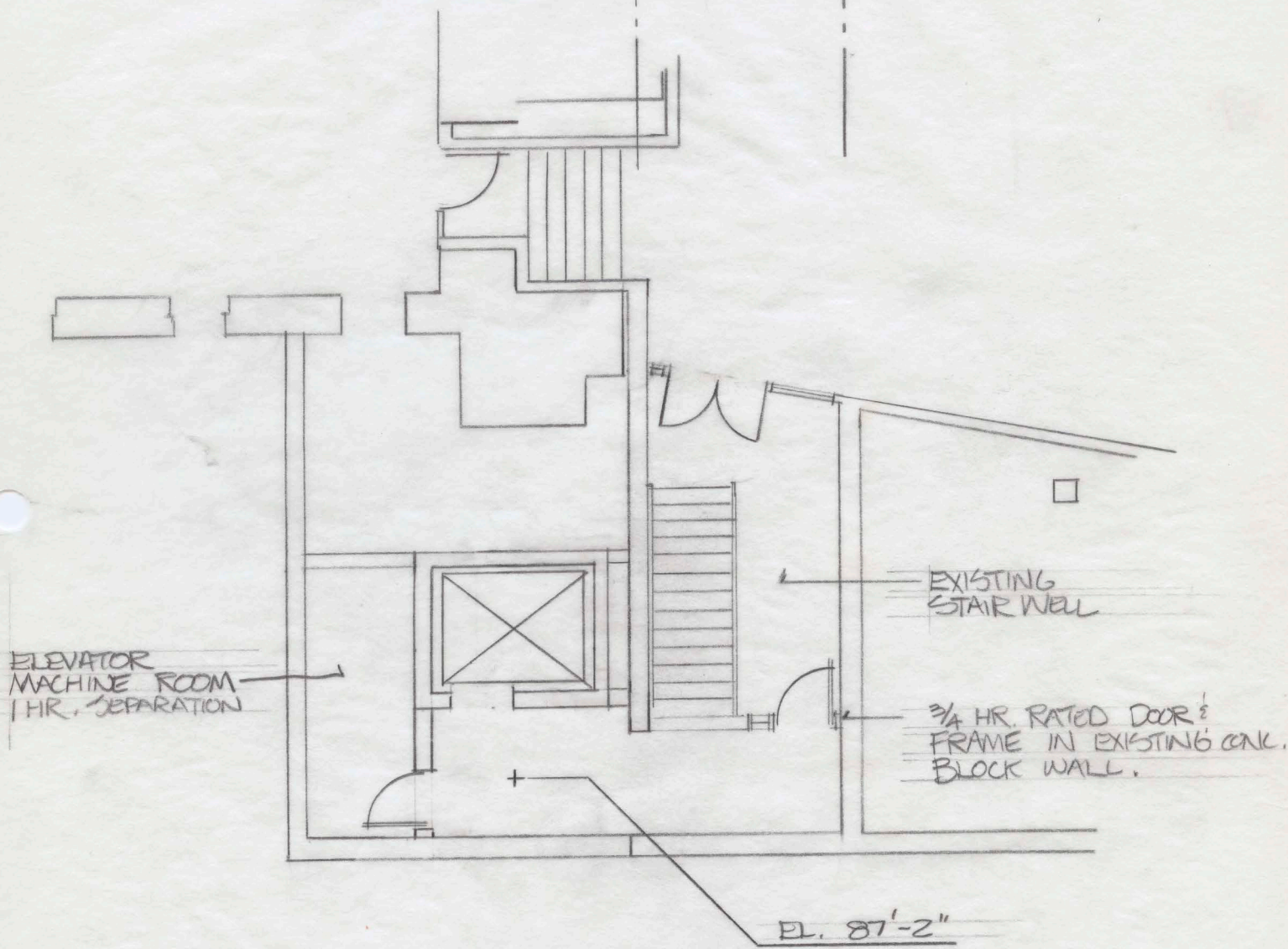




STOUFFER
GRAPHIC ARTS
R1215

A B

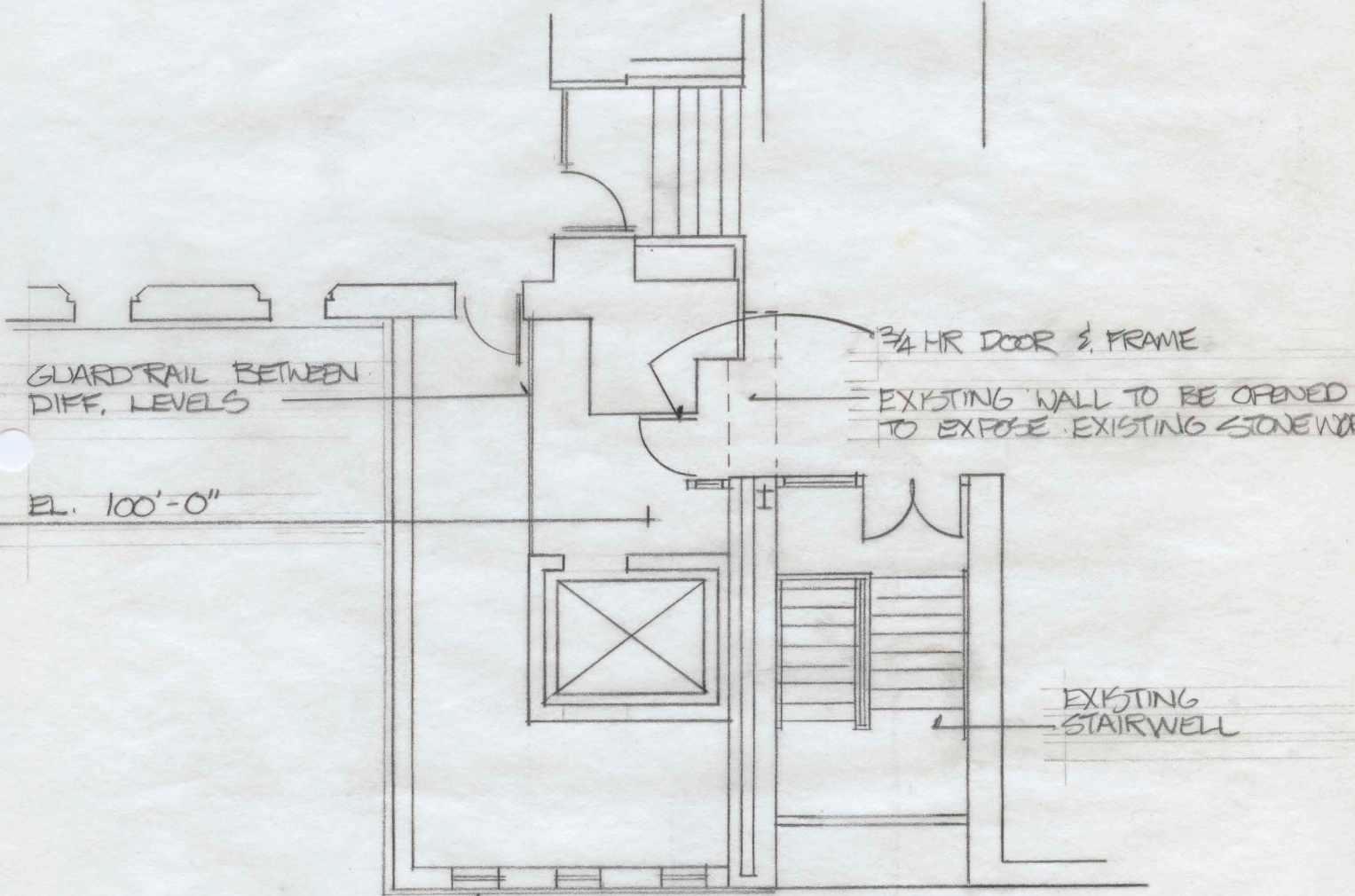


● BASEMENT LEVEL
NORTH EAST ENTRY

1/8" = 1'



A B



GLAZING OPENINGS TO BE SIMILAR TO EXISTING DIMENSIONS.

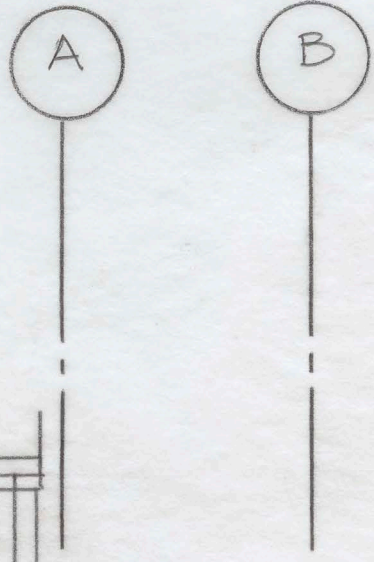
o MAIN FLOOR LEVEL
NORTH EAST ENTRY

1/8" = 1'





STOLPPER
Graphic Arts
R1215

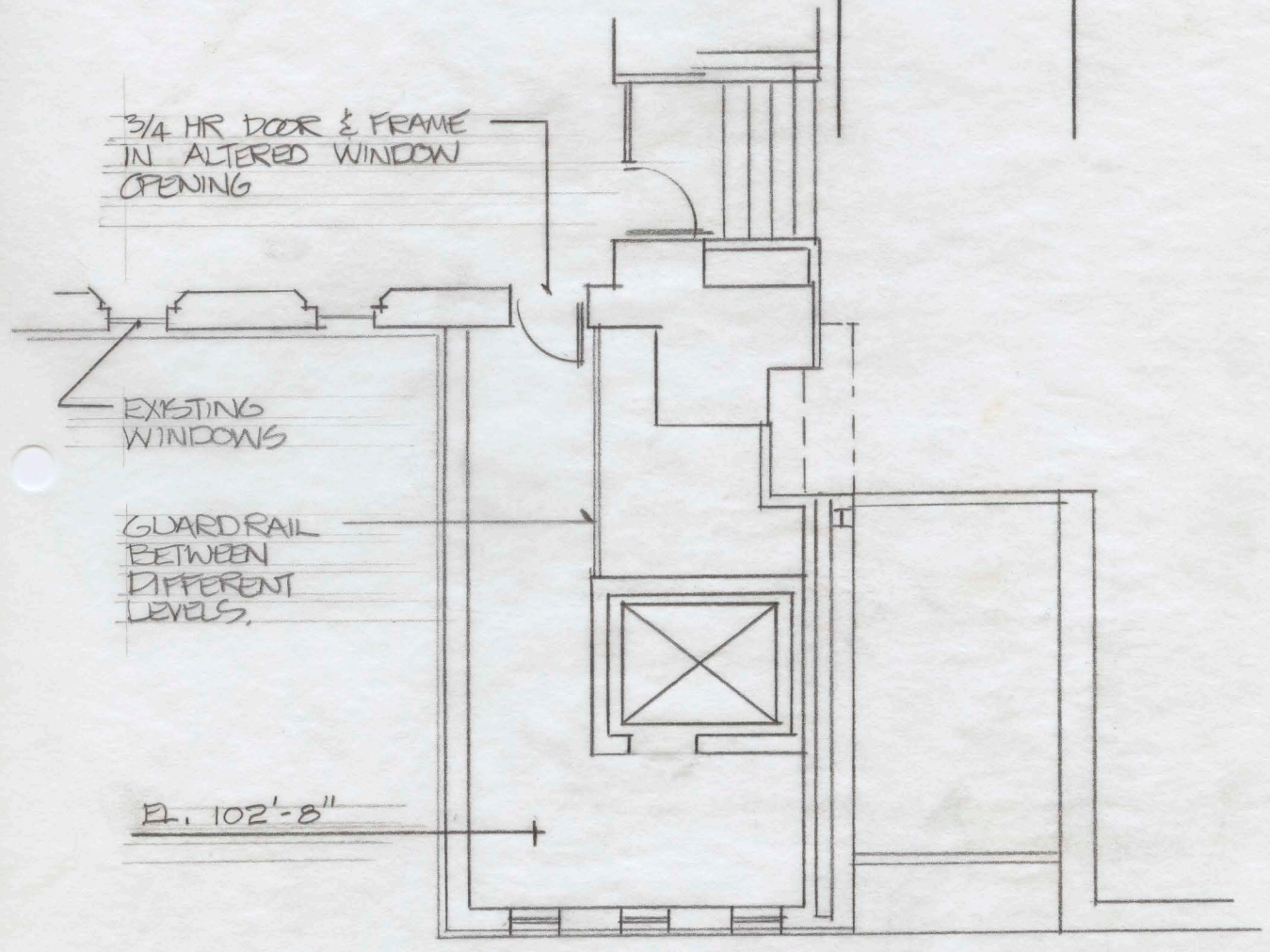


3/4 HR DOOR & FRAME
IN ALTERED WINDOW
OPENING

EXISTING
WINDOWS

GUARDRAIL
BETWEEN
DIFFERENT
LEVELS.

El. 102'-8"



o SACRISTY LEVEL
NORTH EAST ENTRY

1/8" = 1'

